

# Cheltenham Grove

Silverdale, Staffordshire



CERRIS  
HOMES



## CHELTENHAM GROVE

**This lovely trio of two bedroom bungalows are now available in our Cheltenham Grove development. They're perfect for downsizing or as a first home, and provide a great living space.**

Cheltenham Grove is found in the great town of Silverdale, Newcastle-under-Lyme. It homes many shops, parks and Royal Stoke University Hospital is nearby.

### TRANSPORT

There are many transport links based in this area.

Bus stops are easy to find, and there is a bus station in Newcastle-under-Lyme town centre.

Longport train station is just a 13 minute drive away from Cheltenham Grove, and Stoke-on-Trent train station only takes 4 minutes more than this.

When you're going abroad, Manchester Airport is closest and it only takes a 45 minute drive to get there.

### CULTURE

The local area holds many shops and amenities for you. One Stop Shop is a 15 minute walk, or a 4 minute drive. M K Stores is also a convenience store and takes 4 minutes to get to on foot.

There are many restaurants to enjoy in this area, like The Milehouse and Dave's Fish Bar, both taking no more than 10 minutes to get to.

The local park is Silverdale Country Park which offers stunning views and a great place to go for walks.

### SCHOOLS

St Lukes C of E Primary School, Knutton St Mary's C of E Primary School and Silverdale Primary Academy are all close by, and Smylers Pre School is a 4 minute drive away.

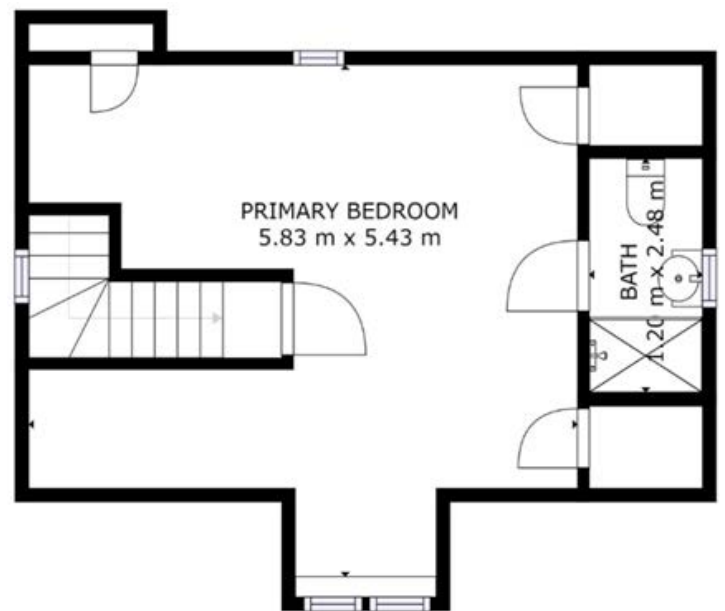
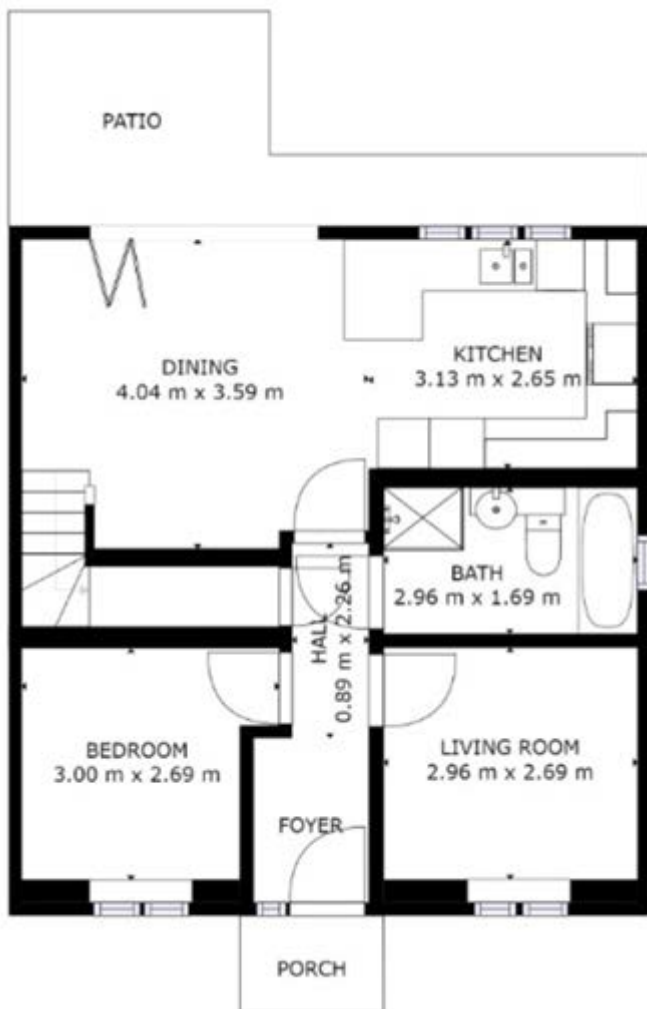
Keele University is local, and there are a variety of well-rated schools surrounding the area.



# CHELTENHAM GROVE

These 3 2-bedroom bungalows are located on a private road and offer great modern and spacious living. They have 2 floors, giving you that extra room.

They are ideal homes for first-time buyers or those who may be looking to downsize. The driveway, patio and garden provide great outdoor spaces.



First floor

Ground floor



*that welcome home feeling*

01782 854748 | [www.cerrishomes.co.uk](http://www.cerrishomes.co.uk) | e: [newhomes@cerrishomes.co.uk](mailto:newhomes@cerrishomes.co.uk) | [@CerrisHomes](https://twitter.com/CerrisHomes)

Aspire Housing Ltd T/A Cerris Homes, Kingsley, The Brampton, Newcastle-under-Lyme, ST5 0QW

A registered society with the Financial Conduct Authority registration number 31218R. Homes Communities Agency registration number L4238.  
Registered office: Kingsley, The Brampton, Newcastle-under-Lyme ST5 0QW VAT No 927 405227.